

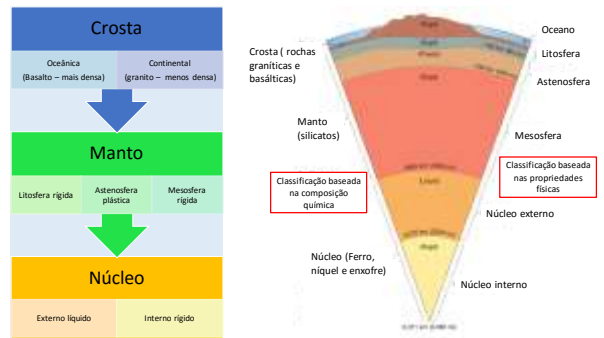
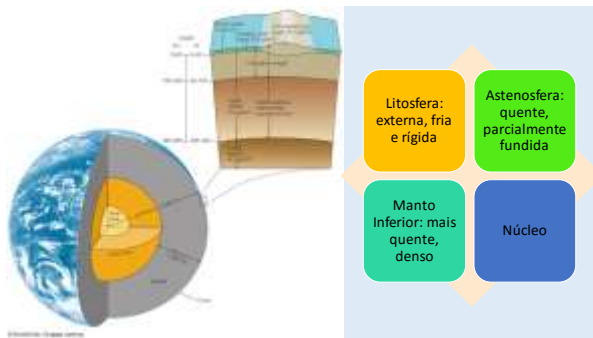
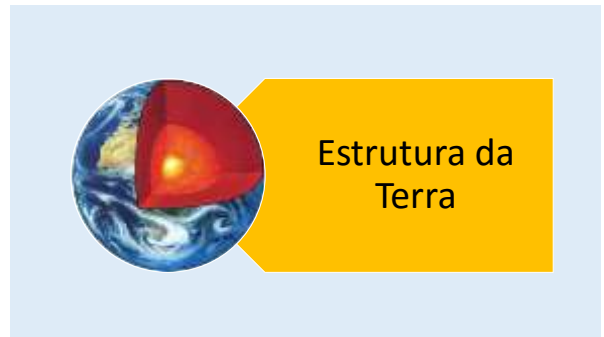


Universidade Federal de São Paulo
Instituto do Mar

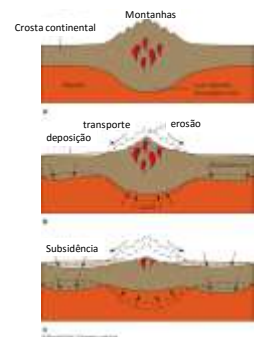
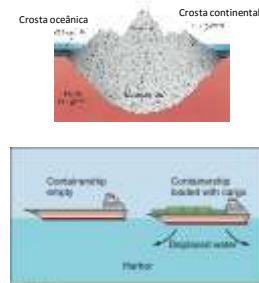
Introdução a Oceanografia

AULA 2 – Estrutura da Terra, Deriva continental, Placas tectônicas, Assolho oceânico, Sedimentação marinha

Prof. Ítalo Braga de Castro



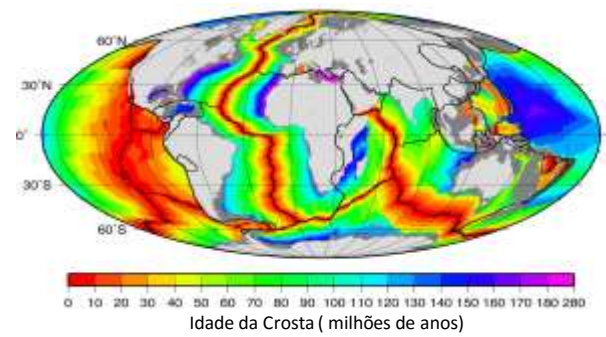
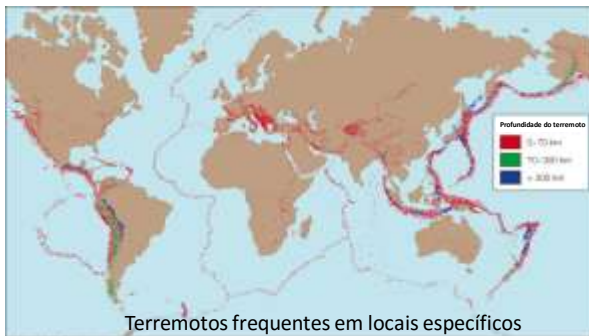
Equilíbrio Isostático



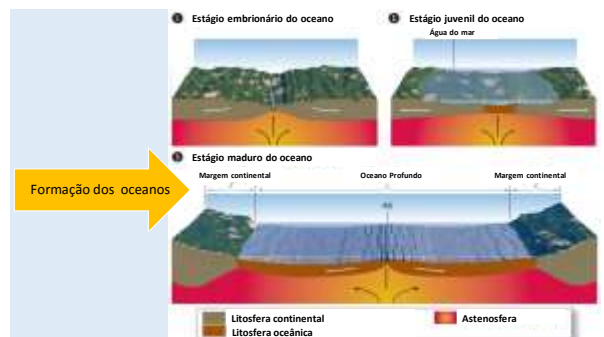
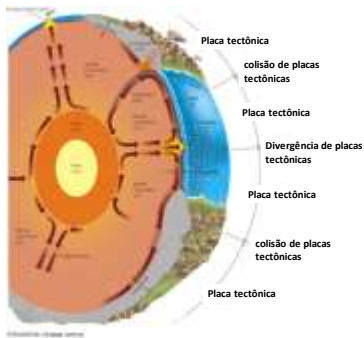
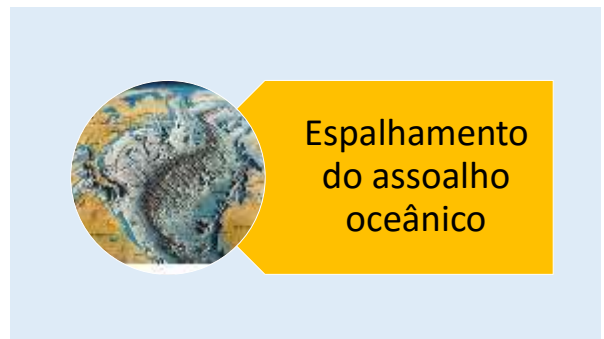
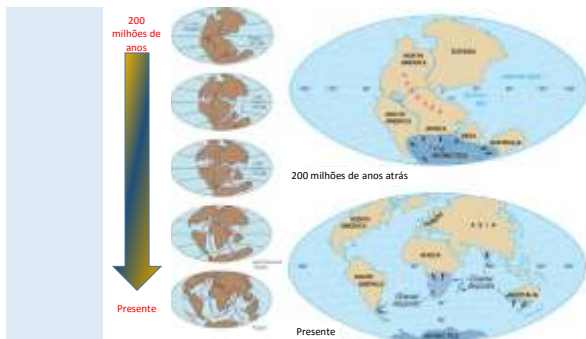


Deriva Continental e Tectônica de Placas

Alfred Wegener, 1912

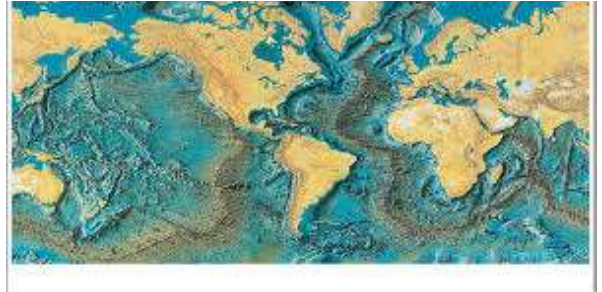


Continentes a 200 milhões de anos atrás

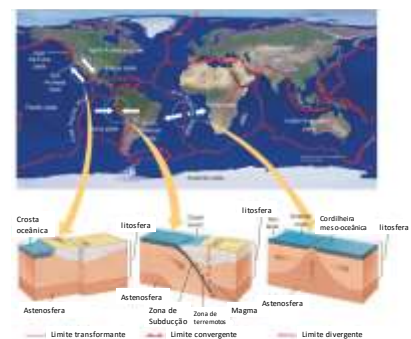
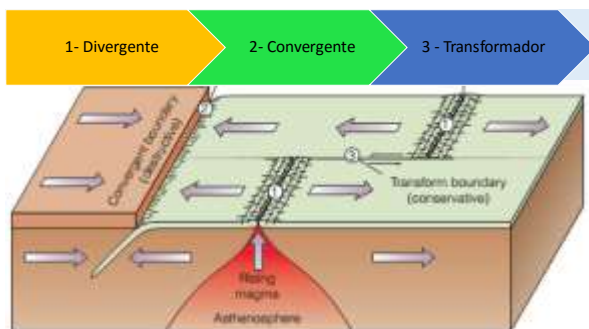
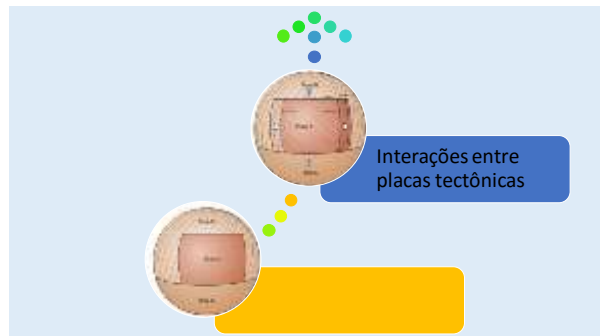


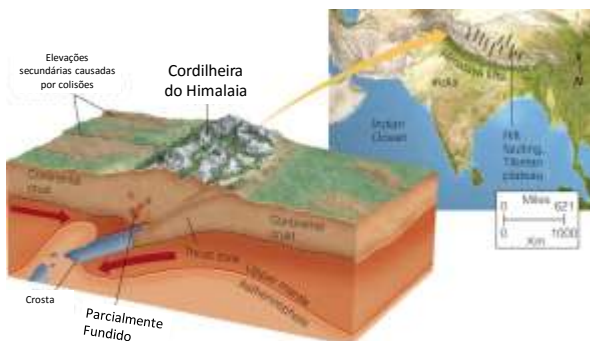
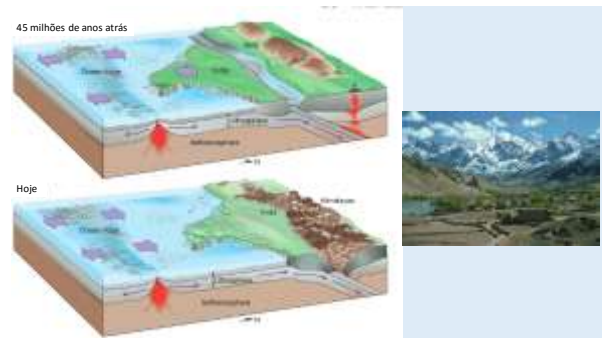
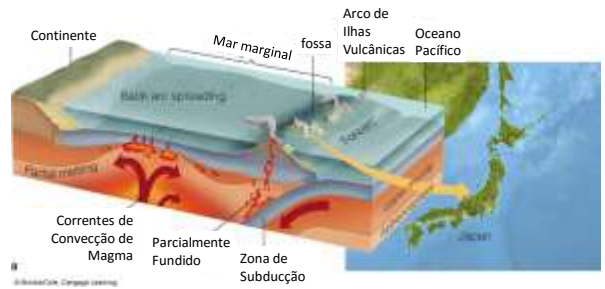
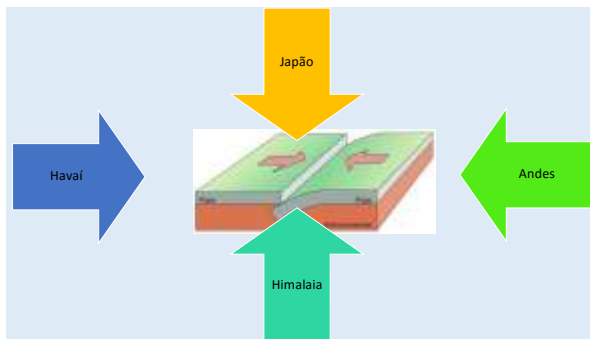


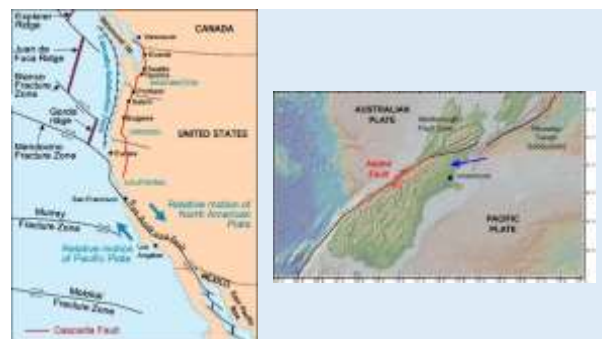
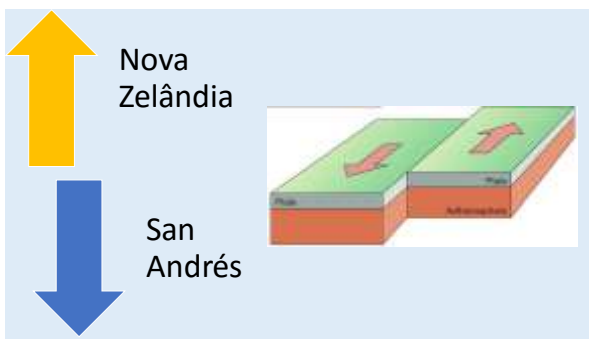
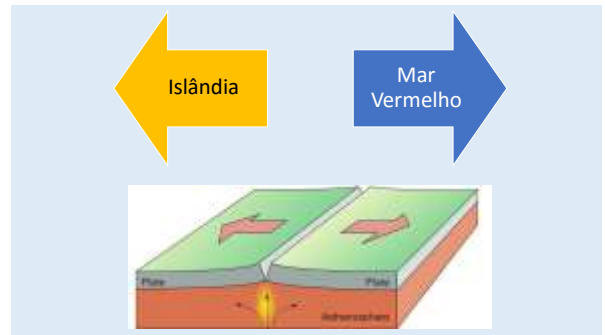
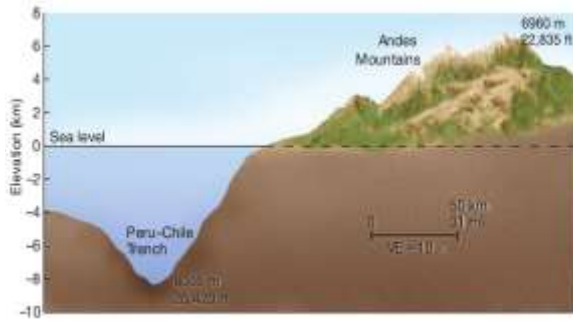
Cordilheiras meso-oceânicas

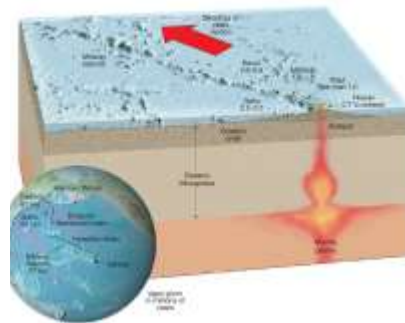
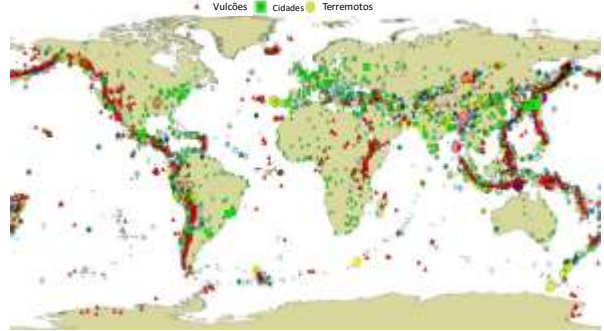
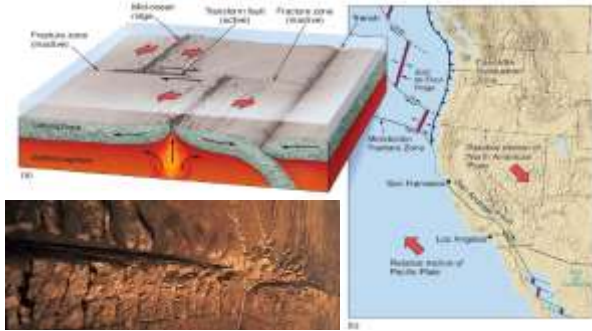


Dorsal meso-atlântica





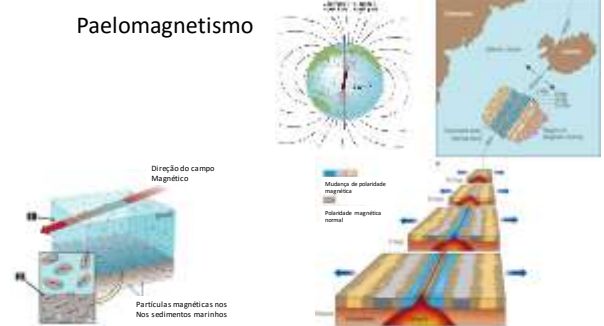




Hotspots

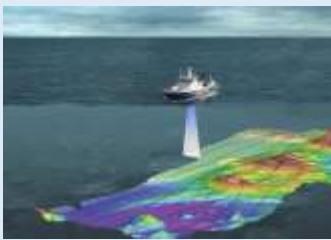


Paelomagnetismo

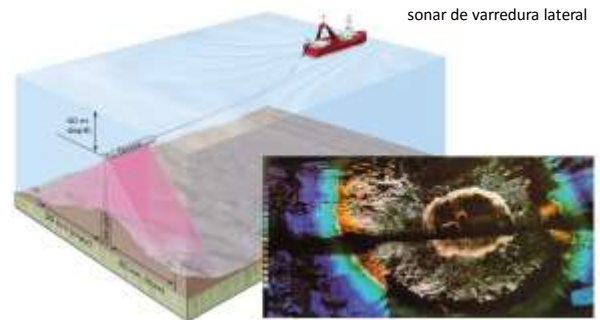




Batimetria

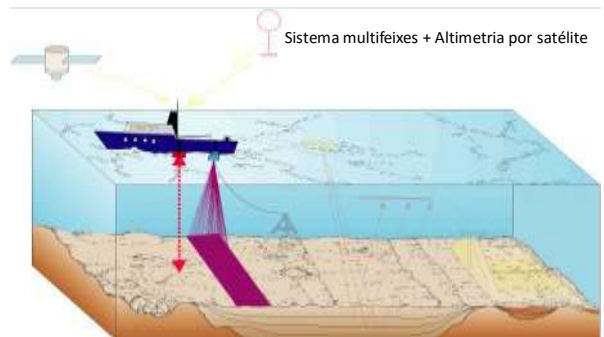
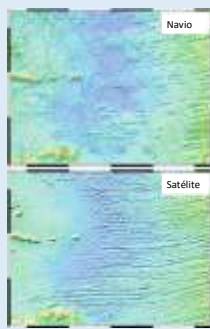
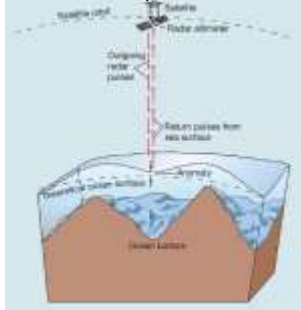


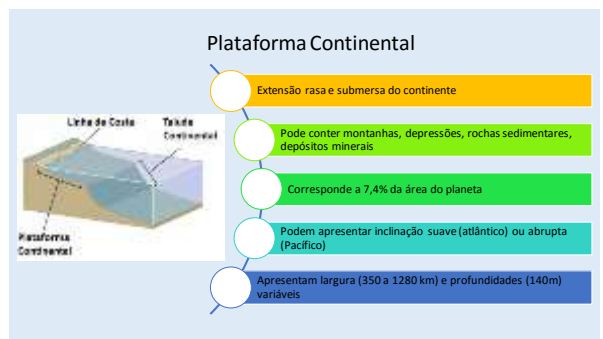
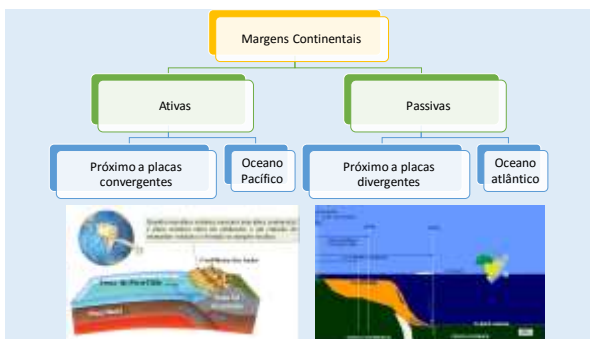
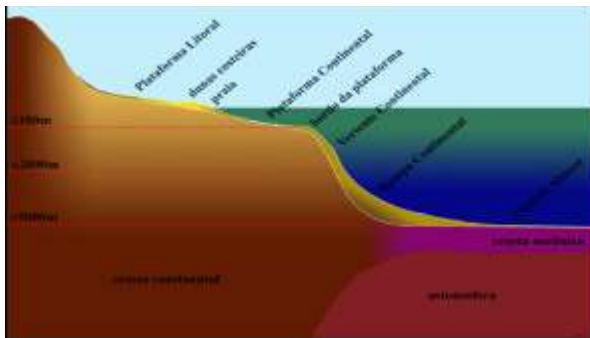
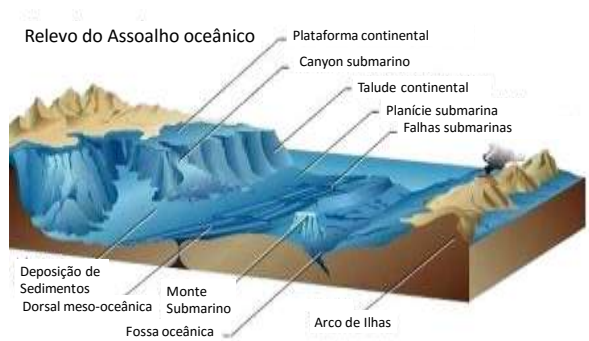
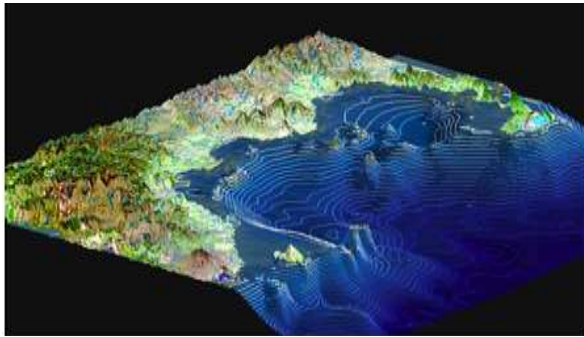
Ecossonda

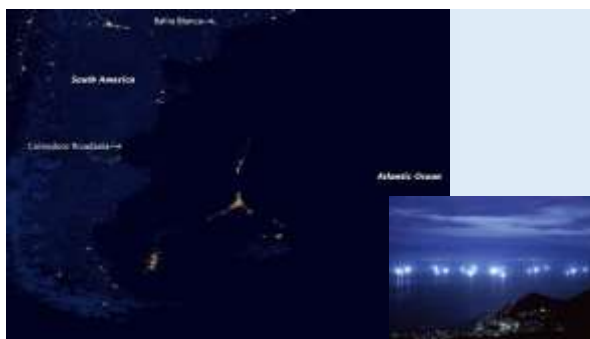
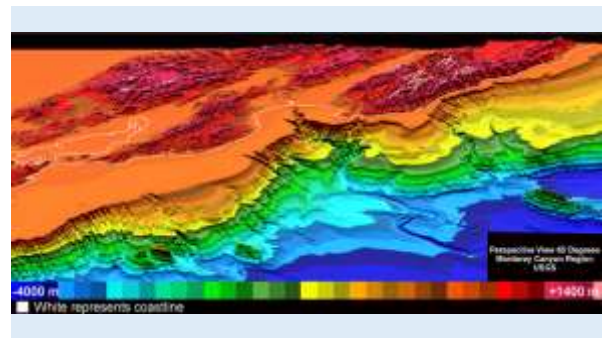
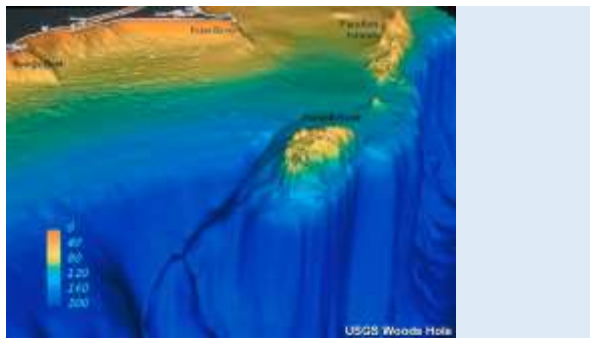
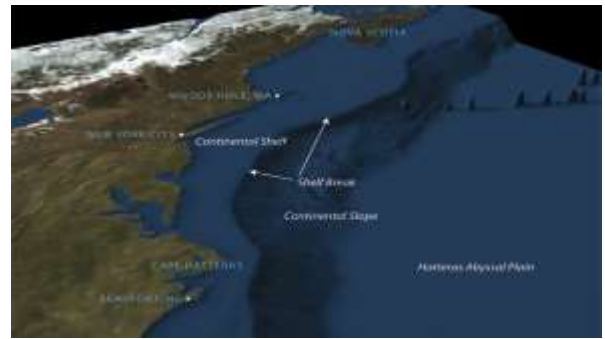


sonar de varredura lateral

Altimetria por satélite



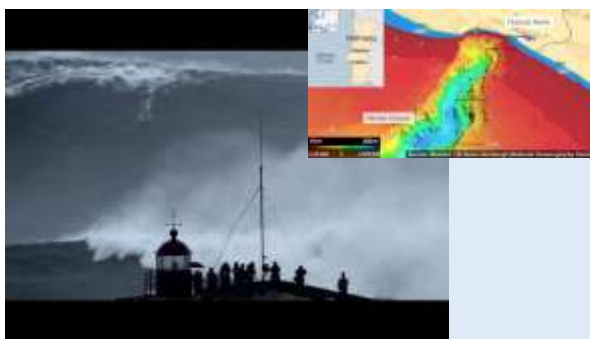
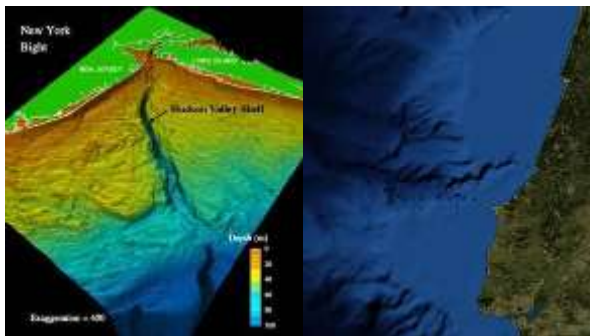
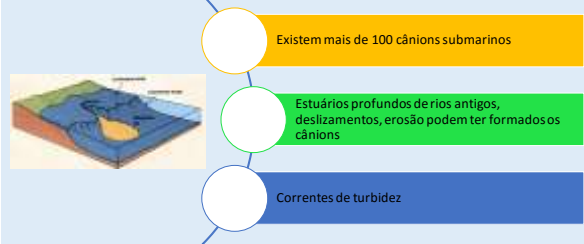




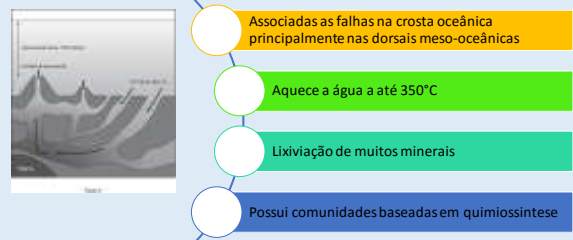
Talude Continental

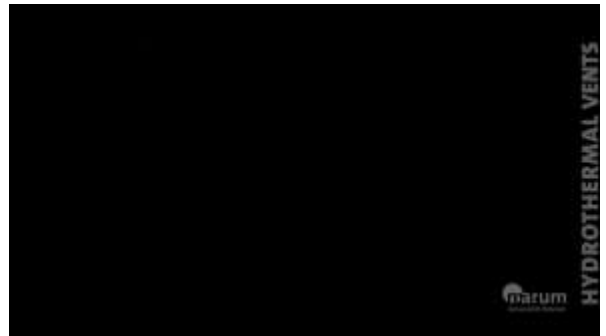


Cânions Submarinos

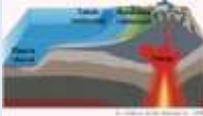


Fontes Hidrotermais





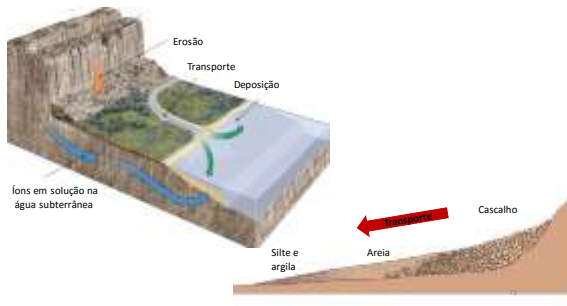
Planícies e colinas abissais



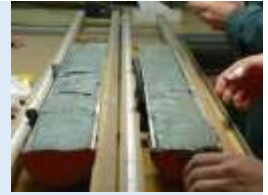
- 25% da área do planeta são planícies e montes abissais
- São regiões planas cobertas de sedimentos
- Mais comuns no Atlântico, menos comuns no Índico e raras no Pacífico
- Localizadas entre as margens continentais e as dorsais meso-oceânicas
- Entre 3700 e 5500 m de profundidade
- As colinas são vulcões extintos e cobertos por sedimentos



Sedimentação Marinha

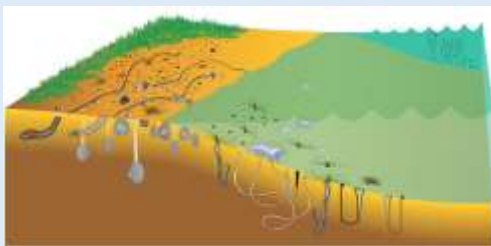


Testemunhos sedimentares



74

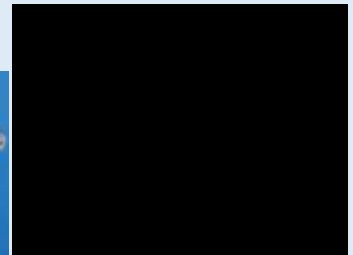
Bioturbação



75

Instrumental em Oceanografia Geológica

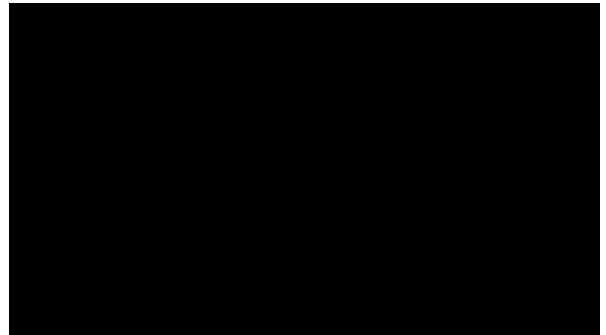
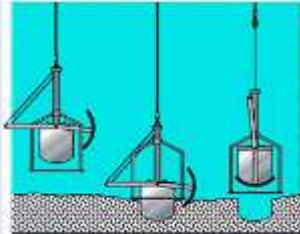
Draga Van Veen



Draga Ekman



Boxcorer



Multicorer



Multi Corer Sampling

Schmidt Ocean Institute

